

COORDINATED TRANSIT PLAN 2021-2025

MONROE COUNTY

2021

This document was completed by the Monroe County Transportation Advisory Committee and Buckeye Hills Regional Council. For more information about this plan please contact Kelly Isaly, Mobility Manager at 1-800-331-2644 opt. 6 or kisaly@buckeyehills.org.

Funding for the development of this plan was provided by the Ohio Department of Transportation



TABLE OF CONTENTS

Executive Summary	1
Geographic Area.....	4
Population Demographics.....	9
Assessment of Available Services.....	14
Assessment of Transportation Needs and Gaps.....	22
V. Goals and Strategies	36
VI. Plan Adoption.....	41
Appendix B: List of Annual Reviews and Plan Amendments.....	35
Appendix C: Definitions	36
Appendix D: Mobility Survey	48
Appendix E: Resolution	52

This document was produced by the Monroe County Transportation Advisory Committee, Buckeye Hills Regional Council. The funding source for the plan: Buckeye Hills Regional Council via the Ohio Department of Transportation.

February 2022

Please direct all questions and comments regarding the document to:

Mobility Manager

Buckeye Hills Regional Council
1400 Pike Street Marietta, Ohio 45750
P 740.336.2039 F 740.374.8038

www.buckeyehills.org/mobility-management

EXECUTIVE SUMMARY

EXECUTIVE SUMMARY

This is the Public Transit-Human Services Transportation Plan for Monroe County, Ohio and it is currently being developed in 2021. This plan fulfills the requirements of the Federal Transit Administration (FTA) to enhance the mobility of seniors and individuals with disabilities program guidance. The purpose of this circular is a reissuance of guidance on the administration of the transit assistance program for seniors and individuals with disabilities under 49 U.S.C. 5310, and guidance for the preparation of the grant applications. This revision incorporates provisions of the Moving Ahead for Progress in the 21st Century Act (MAP-21).

An accessible transportation system is critical to the communities of Monroe County. Transportation provides access to jobs, education, health care, and human services and allows all community members, including older adults, children, and people with disabilities to live independently and engage in community life. It is the purpose of this plan for local stakeholders to work collaboratively to do the following activities:

1. Identify all community resources including:
 - Public door-to-door accessible van providers
 - Senior transportation providers
 - Veteran transportation providers
2. Identify and Prioritize community transportation needs:
 - Implementation of the Monroe County Coordinated Transportation Plan
 - Implementation of a Monroe County Mobility Manager
 - Education and outreach of services
 - Coordination of services
3. Establish a clear plan for achieving shared goals

Monroe County will start coordination efforts with all transportation providers to achieve the goals and meet the needs as listed in the Coordinated Transit Plan. Through partnerships with the community and various stakeholders across the county we will work together towards achieving the goals as stated in this plan. The Mobility Management program will utilize the plan as guidance for future transportation initiatives throughout the county and region.

Fundamental to the Coordinated Transportation Plan process is the active and meaningful involvement of stakeholders. For projects selected for funding under the Section 5310 program,

EXECUTIVE SUMMARY

participation in planning activities must include participation and/or representation of the following, at minimum:

- Seniors;
- Individuals with disabilities;
- People with low incomes;
- Public, private, and non-profit transportation providers;
- Human services providers, and;
- The general public.
- Social Service providers

To ensure participation from the above groups the following stakeholder involvement activities were performed:

A Monroe County Transportation Advisory Committee (TAC) was formed, consisting of representatives from the following organizations:

- Buckeye Hills Regional Council
- Monroe County Board of Developmental Disabilities
- Monroe County Commissioners
- Monroe County Department of Job and Family Services
- Monroe County Engineer
- Monroe County Health Department
- Monroe County Public Transportation
- Monroe County Senior Center
- Monroe County Veterans Office
- Morgan/Noble/Washington County Mobility Managers
- Ohio State University Extension Office – Monroe
- Switzerland of Ohio Local School District

Public engagement surveys were distributed online in the following locations:

- Twitter
- Instagram
- Facebook
- Buckeye Hills Regional Council Website
- Monroe County Beacon

EXECUTIVE SUMMARY

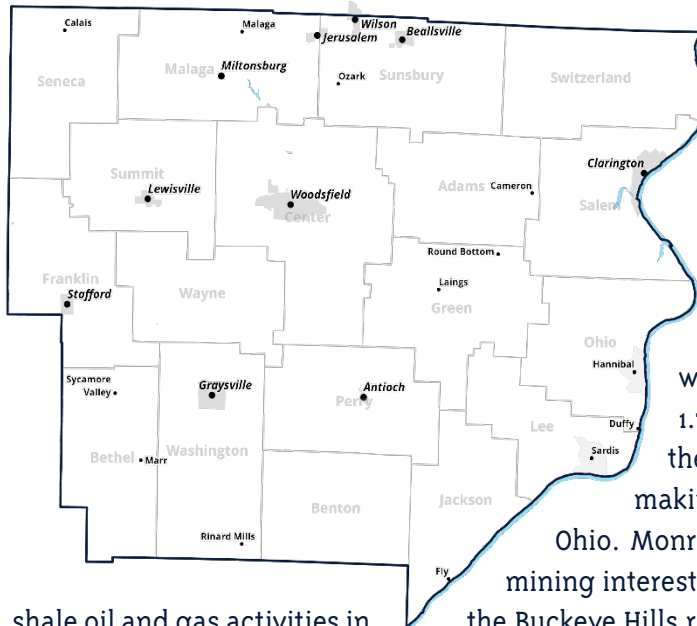
Physical copies of surveys were distributed at the following locations:

- Buckeye Hills Regional Council
- Marden Rehab
- Marietta Memorial Hospital Primary Care - Woodsfield
- Monroe County Clinic
- Monroe County Commissioner's office
- Monroe County Department of Job and Family Services
- Monroe County Engineer
- Monroe County Library
- Monroe County Public Transportation
- Monroe County Senior Center
- Ohio State University Extension Office – Monroe
- Riesbeck's Food Market
- SOMA Thrift Store
- Woodsfield Village Hall
- Traditions Restaurant
- Monroe County Health Department
- Monroe County Chambers Office
- WVU Medicine Physician's Office
- Woodsfield Church of Christ
- Monroe County Veterans Office
- Dr. Cooper's Office
- Woodsfield Moose Lodge
- Dr. Holly Bell's Office
- Bellwood Drug Store
- Rite Aid Pharmacy
- Ohio Hills Health Services

This plan was developed and adopted in coordination with the Monroe County Technical Advisory Committee and the designated Mobility Management Facilitator. More information about the Monroe County Technical Advisory Committee can be found in Appendix A.

GEOGRAPHIC AREA

GEOGRAPHIC AREA



Basic Geography Monroe County, Ohio

Geographically, Monroe County is located on the eastern border of the state of Ohio, across the Ohio River from West Virginia. The terrain is hilly in this area, with waterways cutting through some hills of the Appalachian Plateau, which extends from Lake Erie to the Ohio Rivers. It has a total of 457 square miles (1,1800 km²), of which 456 square miles (1,180 km²) is land and 1.7 square miles (4.4 km²)(0.4%) is water. As of the 2020 Census, the population was 13,385, making it the second-least populous county in Ohio.



shale oil and gas activities in the terrain provide interesting challenges for transportation providers and the public alike. Monroe County because of its rugged terrain and the cultural influences of its early Swiss immigrants it has been called “the Switzerland of Ohio”.

Monroe County has several properties owned by mining interests and was one of the more active counties for the Buckeye Hills region. The rural nature of the county and the terrain provide interesting challenges for transportation providers and the public alike. Monroe County because of its rugged terrain and the cultural influences of its early Swiss immigrants it has been called “the Switzerland of Ohio”.

There are no cities identified in Monroe County, whereas all the population centers are classified as Villages due to population size

There are ten villages identified in Monroe County:

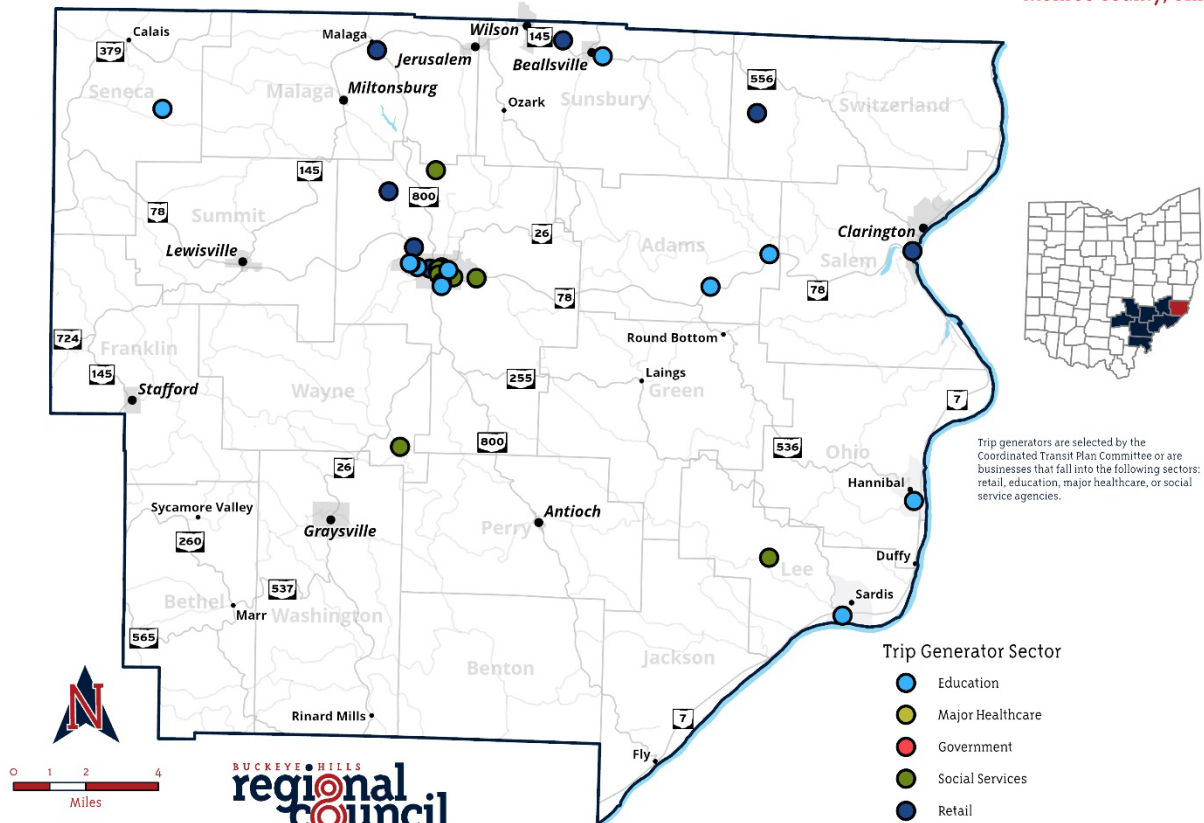
- Antioch
- Beallsville
- Clarington
- Graysville
- Jerusalem
- Lewisville
- Miltonsborg
- Stafford
- Wilson
- Woodsfield (county seat)

GEOGRAPHIC AREA

There are twenty-two identified unincorporated communities

- Alexis
- Altitude
- Brownsville
- Calais
- Cameron
- Duffy
- Fly
- Greenbrier
- Hannibal
- Herlan
- Jericho
- Laings
- Malaga
- Marr
- Ozark
- Rinard Mills
- Round Bottom
- Sardis
- Swazey
- Sycamore Valley
- Trail Run
- Witten

Trip Generators Monroe County, Ohio



Cartography by Buckeye Hills | December 2021
<http://www.buckeyehills.org> | 740-374-9436
 For information about data sources, please contact a GIS Specialist at Buckeye Hills

GEOGRAPHIC AREA

Most major trip generators in the County are located in the Village of Woodsfield. This is a map of the major trip generators in Monroe County including governmental offices, major shopping areas, and major employers.

Major healthcare facilities including hospitals, mental health facilities, and urgent care branches included:

- Dr. Kenneth Cooper
- Eye Care Associates
- Marden Rehabilitation
- Marietta Memorial Primary Care – Woodsfield
- Ohio Hills Health Services
- Tri County Help Center
- Southeast Healthcare
- WVU Medicine

Major education facilities in the county include:

- Guernsey-Monroe-Noble Heart Start
- St. Sylvester School
- Switzerland Of Ohio Local School District

Major shopping centers in the County included:

- Ace Hardware
- Advance Auto Supplies
- Bellwood, Inc.
- Carry Clarington Out, LLC.
- Convenient Food Mart
- Dollar General
- Duke and Duchess
- Family Dollar Stores, Inc.
- Heritage Co-Op
- Malaga BP Grocery and Carryout, Inc.
- Modern Home and Hardware
- Monroe County Auto Parts

GEOGRAPHIC AREA

- Napa
- Red Head Quick Stop, LLC
- Riesbeck's Food Markets, Inc.
- Rite Aid
- Tractor Supply
- True Value Hardware
- Westfall Florist
- SOMA

Major Social services and Governmental agencies in the county include:

- BMV – Monroe County Services
- GMN Tri County CAC, Inc.
- Monroe County Board of Developmental Disabilities
- Monroe County Chamber of Commerce
- Monroe County Court House
- Monroe County Department of Job and Family Services
- Monroe County Health Department
- Monroe County Historical Society
- Monroe County Humane Societies
- Monroe County Public Library
- Monroe County Senior Center
- Monroe County Veteran Services

Major Employers in the county include:

- American Heavy Plate
- Arbors at Woodsfield
- Board of Developmental Disabilities
- Brandywine Assisting Living
- GMN Tri County CAC, Inc.
- Monroe County Public Transit
- Ohio Hills Health Services
- Riesbeck's Food Market
- Rite Aid Pharmacy

GEOGRAPHIC AREA

- Slay Transportation Co. Inc.
- Stellar Care Center
- Switzerland of Ohio Local Schools
- Tractor Supply
- Trustwell Living at Westwood Place
- Various Fast Food Restaurant Chains
- WVU Medicine

POPULATION DEMOGRAPHICS

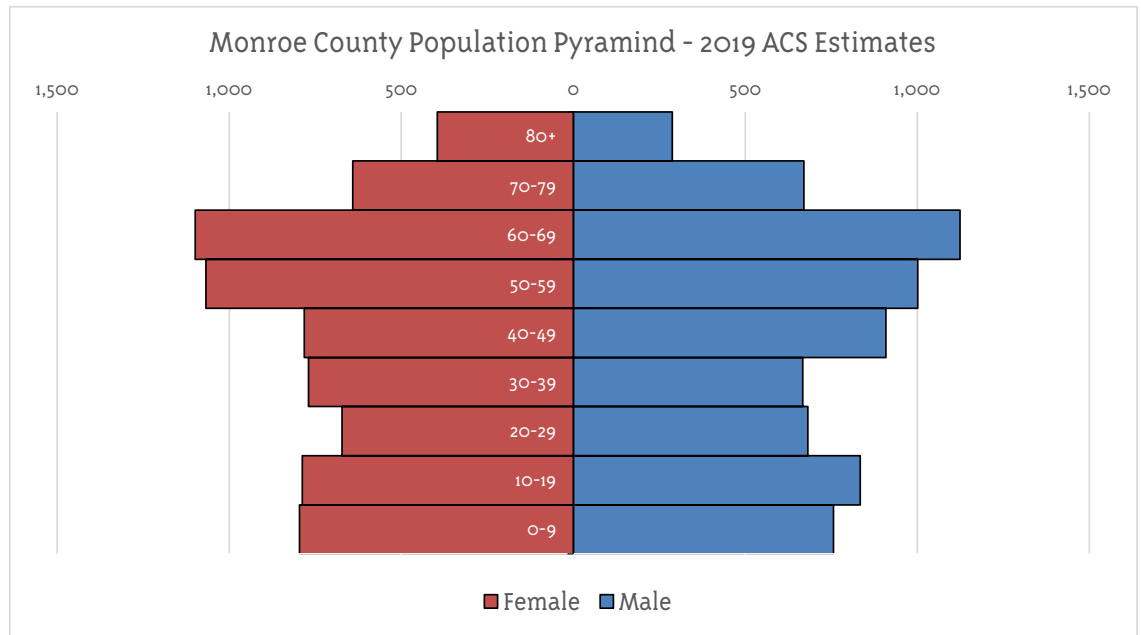
POPULATION DEMOGRAPHICS

According to the US Census Bureau's 2019 population estimates, Monroe County has an estimated population of 13,942 (recently released 2020 Census population is 15,180). Woodsfield is the county seat of Monroe County and is the largest village with an estimated population of 2,352. The following charts are summaries from the 2019 U.S. Census Bureau American Community Survey (ACS) 5-year estimates and outline the population demographics for Monroe County. As is consistent with the region as a whole, Monroe County is expected to lose population over the next 5-20 years.

Projected Population Changes to 2040, by County (2019)	
Monroe County	
2010	14,642
2015	14,420
2020	14,160
2025	13,900
2030	13,590
2035	13,290
2040	13,210
Change	-1,522
Percent Change	-10.39%

Source: Ohio Development Services Agency, Ohio County Indicators

Published July 2020



Monroe County has an aging population as well. Over 16.30% of the total population is aged 65 and over, and over 27% of the total population is 45 to 64 years of age.

POPULATION DEMOGRAPHICS

As can be seen in the tables below, the vast majority of the population of Monroe County is White, with a percentage of 97.58%, and Monroe County has a total minority population of 3.14%. The disabled population of Monroe County is higher, at 20.9% than the national value of 12.6%, and above the average for the State of Ohio, 13.9%. Monroe County's poverty rate is slightly higher at 17.3% when compared to both the national rate of 14.58%, and the state rate of 14.92%.

Residents with Disability		
Monroe County		
Type of Disability	Civilian Noninstitutionalized Population	13,805
	Without a Disability*	10,922
	With a Disability	2,883
	Hearing	975
	Vision	572
	Cognitive	1,111
	Ambulatory	1,377
	Self Care	481
	Independent Living	877

*Value calculated by Buckeye Hills
 Source: US Census Bureau, Table S1810
 ACS (2015-2018)

Population by Race and Hispanic Status (2020)	
Monroe County	
Total Population	13,654
White	13,324
Black	87
Native American/Alaskan Native	24
Asian	27
Native Hawaiian/Pacific Islander	2
Two or More Races*	190
Hispanic (Any Race)**	110
Total Minorities***	429

*The total population is equal to the sum of the "one race only" populations and the two-or-more races category

**Hispanics may be of any race and are included in the columns to the left

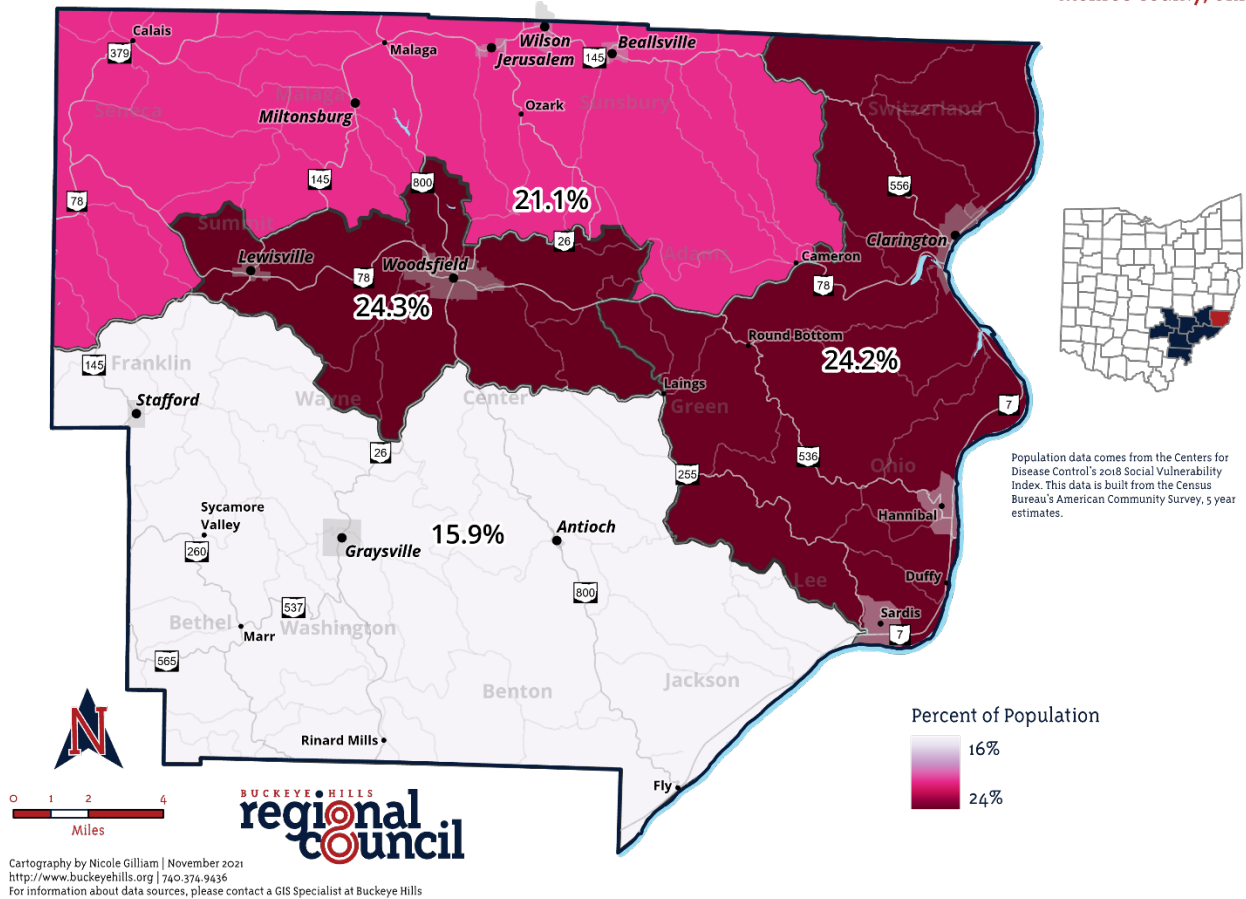
***The total minorities category is computed by subtracting the non-Hispanic-one-race-only whites (data not shown) from the total population

Data Source: Ohio Development Services Agency, Ohio County Indicators

Published July 2020

POPULATION DEMOGRAPHICS

People with a Disability Monroe County, Ohio



As can be seen in the map above, the distribution of individuals with a disability is relatively even in the county, with Census Tracts ranging from 15% to 24%. The higher concentration is in the central to northeast tract. Given the relatively even spread, though, services targeting individuals with a disability will have a difficult time targeting their services to one specific area.

POPULATION DEMOGRAPHICS

Below are tables describing the state of poverty in Monroe County at the individual and family levels. Poverty levels have been generally stable since 2010 at the individual level, changing by only 2.4% from 2010-2019. The same is true at the family level as well, though family poverty has increased by 0.3%.

Percentage of Persons Below Poverty Level 1990-2019		
Monroe County		
Years	1990	21.5%
	2000	13.9%
	2010*	17.3%
	2011*	18.1%
	2012*	16.3%
	2013*	19.0%
	2014*	18.8%
	2015*	19.4%
	2016*	18.8%
	2017*	19.7%
2018*	16.6%	
2019*	17.3%	
Percentage Change	1990-2000	↓ -7.6%
	2000-2010	↑ 3.4%
	2010-2019	↑ 2.4%

*ACS 5-year estimates

Data Source: US Census Bureau, Table DP03

Table Updated June 2021

Number of Persons Below Poverty Level 1990-2019		
Monroe County		
Years	1990	3,264
	2000	2,035
	2010*	2,552
	2011*	2,662
	2012*	2,393
	2013*	2,783
	2014*	2,743
	2015*	2,822
	2016*	2,715
	2017*	2,805
2018*	2,339	
2019*	2,384	
Change	1990-2000	↓ -1,229
	2000-2010	↑ 517
	2010-2019	↓ -168

*ACS 5-year estimates

Data Source: US Census Bureau, Table DP03

Table Updated June 2021

POPULATION DEMOGRAPHICS

Percentage of Families Below Poverty Level 1990-2019		
Monroe County		
Years	1990	18.2%
	2000	11.0%
	2010*	12.3%
	2011*	13.3%
	2012*	11.8%
	2013*	13.7%
	2014*	12.7%
	2015*	13.3%
	2016*	13.3%
	2017*	14.3%
	2018*	12.5%
2019*	12.6%	
Percentage Change	1990-2000	↓ -7.2%
	2000-2010	↑ 1.3%
	2010-2019	↑ 0.3%

*ACS 5-year estimates

Data Source: US Census Bureau, Table DP03

Table Updated June 2021

Number of Families Below Poverty Level 1990-2019		
Noble County		
Years	1990	394
	2000	276
	2010*	569
	2011*	496
	2012*	389
	2013*	513
	2014*	472
	2015*	406
	2016*	413
	2017*	451
	2018*	447
2019*	461	
Change	1990-2000	↓ -118
	2000-2010	↑ 293
	2010-2019	↓ -108

*ACS 5-year estimates

Data Source: US Census Bureau, Table DP03

Table Updated June 2021

The table below shows that 0.9% of the population of Monroe County, or 114 people, over the age of 5, Speak English "Less Than Very Well," according to 2019 5-year American Community Survey Estimates. While that is a very small population, it is still one that should be accommodated when possible for in service availability.

Population that Speaks English "Less than Very Well"	
Population 5 and Up	Percentage 5 and Up
114	0.9%

ASSESSMENT OF AVAILABLE SERVICES

ASSESSMENT OF AVAILABLE SERVICES

Conducting an evaluation of service provider capabilities and analyzing the existing gaps and duplications of services for transportation resources in each community, provides transportation planners with the information needed to implement changes that will improve the network of transportation resources and services within Monroe County and across county lines.

The Monroe County Transportation Advisory Committee (TAC) identified stakeholders to participate in the assessment of available services. These stakeholders included those who were represented in the current or past advisory committees, as well as others who the advisory committee identified as being appropriate stakeholders.

Opportunities to comment and participate in the coordinated transportation plan development process were given to each of the identified stakeholders.

The purpose of the stakeholder engagement was to offer the stakeholders an opportunity to discuss the specific transportation services, gaps, needs and priorities for their respective service areas or communities.

INVENTORY OF TRANSPORTATION PROVIDERS

Transportation providers participating in this plan include:

- GMN Tri-County CAC, Inc
- Monroe County Board of Developmental Disabilities
- Monroe County Public Transportation
- Monroe County Veterans Office
- Olde Towne Taxi, LLC

EXISTING TRANSPORTATION SERVICES

The following information is based on tabulations from the survey and interview results. A total of three organizations provided information about their services.

List of Transportation Service Providers

Agency Name: GMN Tri-County CAC Senior Services

Transportation Service Type: Senior Transportation through Monroe County Public Transit

Other Services Provided: Senior Services

Contact Information: 740-472-1312

Hours: 8:00 am – 4:00 pm, Monday - Friday

Service Area: Monroe County

ASSESSMENT OF AVAILABLE SERVICES

Eligibility Requirements: 60 years of age and up

Website: www.gmntrico.org

Agency Name: Monroe County Board of Developmental Disabilities

Transportation Service Type: Door-to-door, fixed-route, school transportation, provides vouchers

Other Services Provided: N/A

Contact Information: 740-472-1712

Hours: 4:00 am – 8:00 pm, Monday - Friday

Service Area: Monroe County

Eligibility Requirements: Only available for agency clients

Website: N/A

Agency Name: Monroe County Public Transportation

Transportation Service Type: Public Transportation

Other Services Provided: N/A

Contact Information: 740-472-2505

Hours: 8:00 am – 4:00 pm, Monday - Friday

Service Area: Monroe County

Eligibility Requirements: Everyone welcome

Website: www.monroecountyohio.com

Agency Name: Olde Towne Taxi, LLC

Transportation Service Type: Public Transportation

Other Services Provided: N/A

Contact Information: 740-228-8852

Hours: 24/7 Everyday

Service Area: Monroe County

Eligibility Requirements: Everyone welcome

Website: https://www.facebook.com/people/Olde-Towne-Taxi-LLC/100091819542156/?_rd

Agency Name: Monroe County Veterans Office

Transportation Service Type: Veteran Transportation

Other Services Provided: N/A

Contact Information: 740-472-0743

Hours: 8:30 am - 4:30 pm Monday - Friday

ASSESSMENT OF AVAILABLE SERVICES

Service Area: Monroe County

Eligibility Requirements: Veterans Only

Website: Monroe.Veterans@MonroeCountyOhio.com

ASSESSMENT OF AVAILABLE SERVICES

The table below provides a summary of the characteristics of the participating transportation providers and organizations that purchase transportation on behalf of consumers.

Organizational Characteristics						
Agency Name	Directly Operates Transportation	Purchases Transportation	Legal Authority	# One-Way Passenger Trips Annually	Avg. Weekly Trip Denials	Vehicles Only Available for HS
GMN Tri-County CAC, Inc	Yes	No	Private Non Profit	300	Rare	
Monroe County Board of D.D.	Yes	No	NA	226	0	N/A
Monroe County Veterans	Yes	No	Government		N/A	N/A
Olde Towne Taxi, LLC	Yes	No	For Profit		N/A	N/A
Monroe County Public Transportation	Yes	No	Government	18,804	Rare	No

*Answering "Yes" indicates that the agency is closed door. An agency is considered closed door if they *only* provide transportation to their facility as a courtesy or if they *only* serve a particular clientele that are enrolled in their agency programs (i.e. members of a sheltered workshop, or residents in a nursing home). Answering "No" indicates that the agency is open door. This means the service is open to the public or a segment of the general public defined by age, disability, or low income. For example if an agency provides general transportation for anyone in the community who is over the age of 60, they are considered "open door;" an individual who is 60 or over can request transportation to a doctor's appointment or the grocery store regardless

The participating organizations provide a wide range of transportation including ADA Paratransit, Demand Response, On-Demand, and Human Service Agency Fixed Routes. All the participating organizations provide services on weekdays, with one operating transportation on Saturdays and/or Sundays. Evening services after 4:00 pm are not available at this time. The next table depicts the transportation service characteristics by agency.

ASSESSMENT OF AVAILABLE SERVICES

Transportation Service Characteristics					
Agency Name	Mode of Service	Days & Hours of Operation	Provides Medicaid-Eligible Trips (Y/N)	Level of Passenger Assistance Provided	Training Courses Required for Drivers
GMN Tri-County Senior Services	Medical Escort	Monday - Friday 8:00 Am - 4:00 PM	No	One on One	Drive Training; CPR/First Aid
Monroe County Board of D.D.	Enrolled clients in DD	Monday - Friday 8:00 Am - 4:00 PM	No	Assistance Needed	ODE Requirements
Monroe County Veterans	Veterans	Monday - Friday 8:00 Am - 4:30 PM	No	Door to Door	
Olde Towne Taxi, LLC	Public Transportation	24/7	No	Door to Door	N/A
Monroe County Public Transportation	Public Transit	Monday - Friday 8:00 Am - 4:00 PM Saturday 7:00 AM - 5:00 PM	Yes	Door to Door	Defense Driving; CPR/First Aid; Drive Training; Blood Born Patagons

Transportation-related expenses and revenues also differ by organization. The Federal Transit Administration, Ohio Department of Transportation, County and City resources, grants, fares and donations are common revenue sources for transportation operators in Monroe County. The table below provides a summary of expenses and revenues for public and non-profit transportation programs.

ASSESSMENT OF AVAILABLE SERVICES

Transportation- Related Expenses and Revenues						
Agency Name	Fare Structure	Donations Accepted (Y/N)	Number of Full-Time & Part-Time Drivers	Number of Full-Time & Part-Time Schedulers/Dispatchers	Revenue Sources (most recent Fiscal Year)	Total Annual Transportation Expenses
GMN Tri-County Senior Services	No Cost	Yes	1 Part Time	None	Grant Funded	\$20,000
Monroe County Veterans	No Cost	No			State Funded	
Olde Towne Taxi, LLC	N/A	No	N/A	N/A	Private	N/A
Monroe County Board of D. D.	N/A	No	5	1	Levy	N/A
Monroe County Public Transportation	0-50 miles \$5 50-100 miles \$10 100+miles \$25 \$1 in city limits (rates are one-way)	No	11 part time 4 full time	1 full time	ODOT, Contracts	\$382,937.13

The Monroe County Transportation Advisory Committee explored information about transportation options other than traditional public and human services transportation. Transportation options might include bike share, ride share, intercity, taxi services, and more. The Committee did not identify any Alternative/Active transportation options at this time.

The table below provides basic information about local travel training program options.

Transportation Resources				
Transportation Resource	Availability	Cost	Usage	Service Area
Monroe County Mobility Manager	5 days a week	Free	Community Members	Monroe County

The table below illustrates the technology used by each transportation provider for scheduling, dispatching, and/or GPS tracking vehicles.

ASSESSMENT OF AVAILABLE SERVICES

Technology				
Agency Name	Name of Scheduling Software	Do you have an App for Transportation (Y/N)?	Name of Dispatching Software	AVL System/ GPS (Y/N)
GMN Tri-County Senior Services	N/A	No	Call In	N/A
Monroe County Veterans	N/A	N/A	Call In	N/A
Olde Towne Taxi, LLC	N/A	No	Call In	N/A
Monroe County Board of D. D.	N/A	No	Call In	N/A
Monroe County Public Transportation	Tripmaster	No	Tripmaster	Yes (GPS)

ASSESSMENT OF COMMUNITY SUPPORT FOR TRANSIT

Lack of transportation has been and continues to be, a very significant problem for people living in poverty, particularly for people in rural areas such as Monroe County where there are limited public transportation options. Monroe County has a long-recognized need for transportation services in the region and has a long history of overall support for transportation initiatives.

Recognizing the need for the growth of transportation in the community, Monroe County partnered with Buckeye Hills Regional Council (BHRC) and Ohio Department of Transportation (ODOT) to facilitate the Monroe County Coordinated Transportation plan in 2022.

A working transportation stakeholder group was formed, known as the Monroe County Transportation Advisory Committee (TAC). This Committee undertook an extensive review of the transportation services in the county and identified strategies and priorities for addressing these needs. This group has continued to meet since in an advisory capacity and continued to advance the strategies highlighted below:

- Increasing understanding and awareness of community transportation needs
- Increasing awareness of current community transportation options and programs

ASSESSMENT OF NEEDS AND GAPS

- Ensuring that transportation consideration is included in local and regional planning activities
- Increasing local capacity for transportation services
- Assisting individuals with accessing all community transportation options

With the support of the County, Monroe County Department of Job and Family Services, Guernsey-Monroe-Noble Community Action Program, Monroe County Board of Developmental Disabilities, and Monroe County Health Department, Buckeye Hills Regional Council began to manage the project and outlined in motion a plan to achieve the goals of the project in Monroe County.

SAFETY

The safety of the transit service being provided is of the utmost importance to the agencies that provide transportation services in Monroe County. Drivers are screened and trained so they may provide the safest transportation to the clients they serve. Training drivers receive include First Aid/CPR; Defensive Driving: DRIVE; Blood Borne Pathogens; Wheelchair Securement: and SureLok System.

SUMMARY OF EXISTING RESOURCES

GMN Tri-County CAC, Inc – Senior Program

- The GMN Tri-County CAC, Inc. serves seniors of Monroe County.
- Normal hours of operation are Monday through Friday 8:00 am to 4:00 pm.
- The service area includes all of Monroe County and includes, but is not limited to: medical appointments, treatment clinics, and pharmacies.
- The service is a demand-response, door-to-door service with drivers assisting clientele to the door of their destination.
- Donations accepted.

Monroe County Board of Development Disabilities

- Client Transportation Only
- Normal hours of operation are Monday through Friday 8:00 am to 4:00 pm
- The service area includes all of Monroe County

Monroe County Public Transportation

- Monroe County Public Transportation is a General Public Transportation system for everyone; this includes adults, the disabled, children, and all the general public. There are no income or age guidelines for people to ride with Monroe County Public Transportation.

ASSESSMENT OF NEEDS AND GAPS

- Normal hours of operation are Monday through Friday 8:00 am – 4:00 pm.
- Service area includes all of Monroe County.
- Fares include:
 - 0-50 MILES \$5.00
 - 50-100 MILES \$10.00
 - 100 + MILES \$25.00
 - Per Trip anywhere within Monroe County \$1.00

Monroe County Veterans Services

- Veteran Transportation Only
- Normal hours of operation are Monday through Friday 8:00 am to 4:30 pm
- The service area includes all of Monroe County

Olde Towne Taxi LLC

- General Public Transportation
- Normal hours of operation 24/7
- The service area includes all of Monroe County

ASSESSMENT OF TRANSPORTATION NEEDS AND GAPS

To better understand the needs of Monroe County, the Transportation Advisory Committee examined research and data, as well as solicited input from the community to gather information about needs and gaps in transportation services.

The demographic and socio-economic conditions of the study area are discussed in the Demographics Chapter of this plan. The following overview is an evaluation of the gaps in service based on geographic data as well as from the perspective of the targeted populations, transportation providers, and the general public.

The Monroe County Transportation Advisory Committee contacted a variety of stakeholders in the area in an attempt to solicit input and request participation from any organization that could potentially be impacted by the coordinated transportation planning process. More information on how the lead agency engaged stakeholders and the general public is available upon request.

The following methods were used to assess transportation needs and gaps:

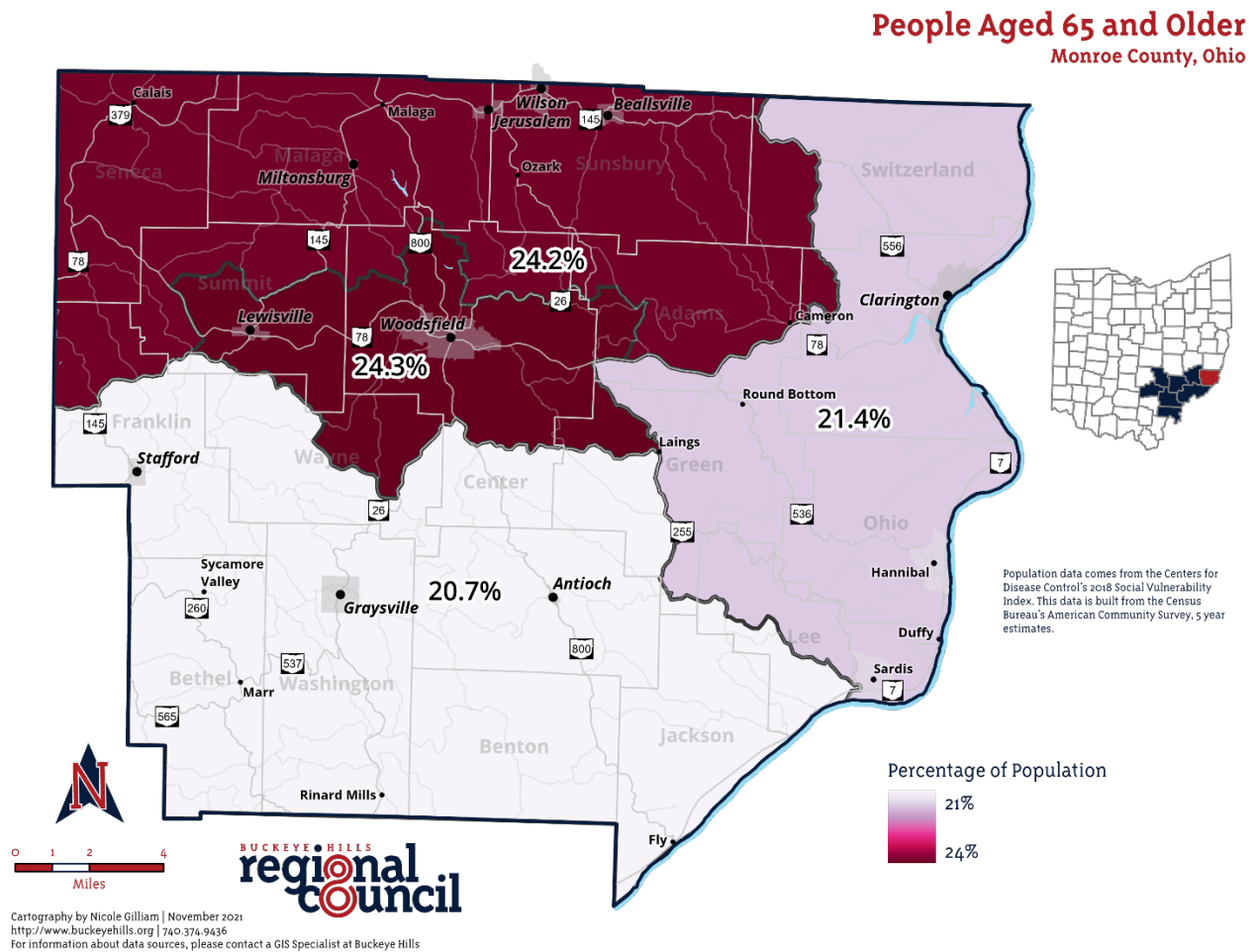
- Assessment of data and demographics.
- Public Meetings to solicit input.

ASSESSMENT OF NEEDS AND GAPS

- Surveys of older adults, individuals with disabilities, and the general public.

LOCAL DEMOGRAPHIC AND SOCIO-ECONOMIC DATA

Data for each target population group were aggregated by Census Tracts for transportation analysis. The demographic and socio-economic data are valuable to provide a comparison of where the highest and lowest densities of individuals who are most likely to need transportation reside. This information can then be compared to the locations of (1) major trip generators, and (2) available transportation services.



The map above illustrates the areas where the number of older adults (age 65 and older) is concentrated. In Monroe County, approximately 22.7 % of the population are 65 or older. No tract has less than 20.7% of its population being people over the age of 65. The northern tract, which includes part of Woodfield, has 24% of its population over the age of 65.

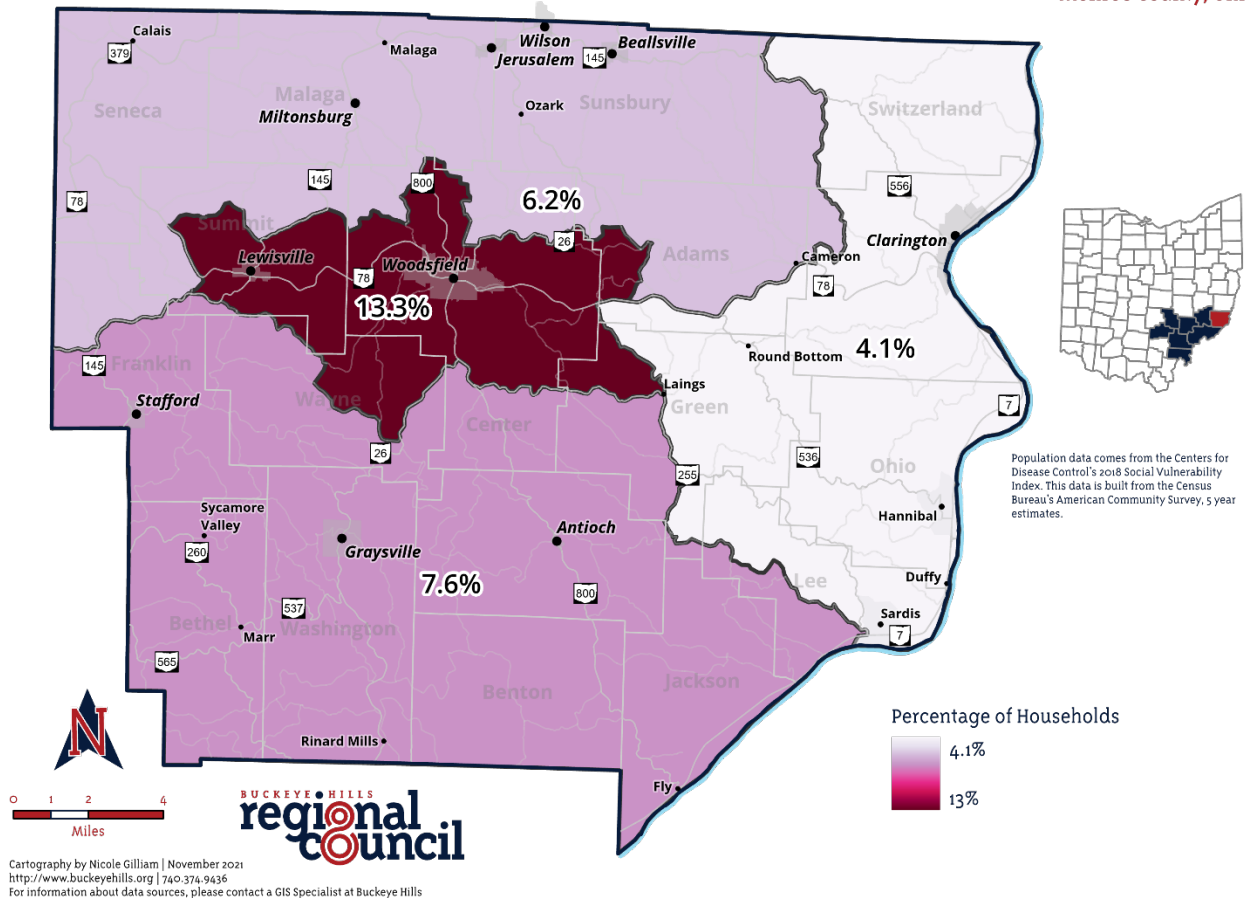
Older adults are most likely to use transportation services when they are unable to drive themselves or choose not to drive. Older adults also tend to be on a limited/fixed retirement income, therefore transportation services are a more economical option to owning a vehicle. For these reasons, the

ASSESSMENT OF NEEDS AND GAPS

population of older adults in an area is an indicator of potential transit/transportation services demand.

The density of individuals aged 65 and older is concentrated in the Northern part of Monroe County, outside of the Village of Woodsfield. These outlying areas have the least amount of affordable transportation options available to them. Since most seniors in Monroe County live outside the Village, they reside in areas further away from medical care facilities and senior services.

Households with No Vehicle Monroe County, Ohio

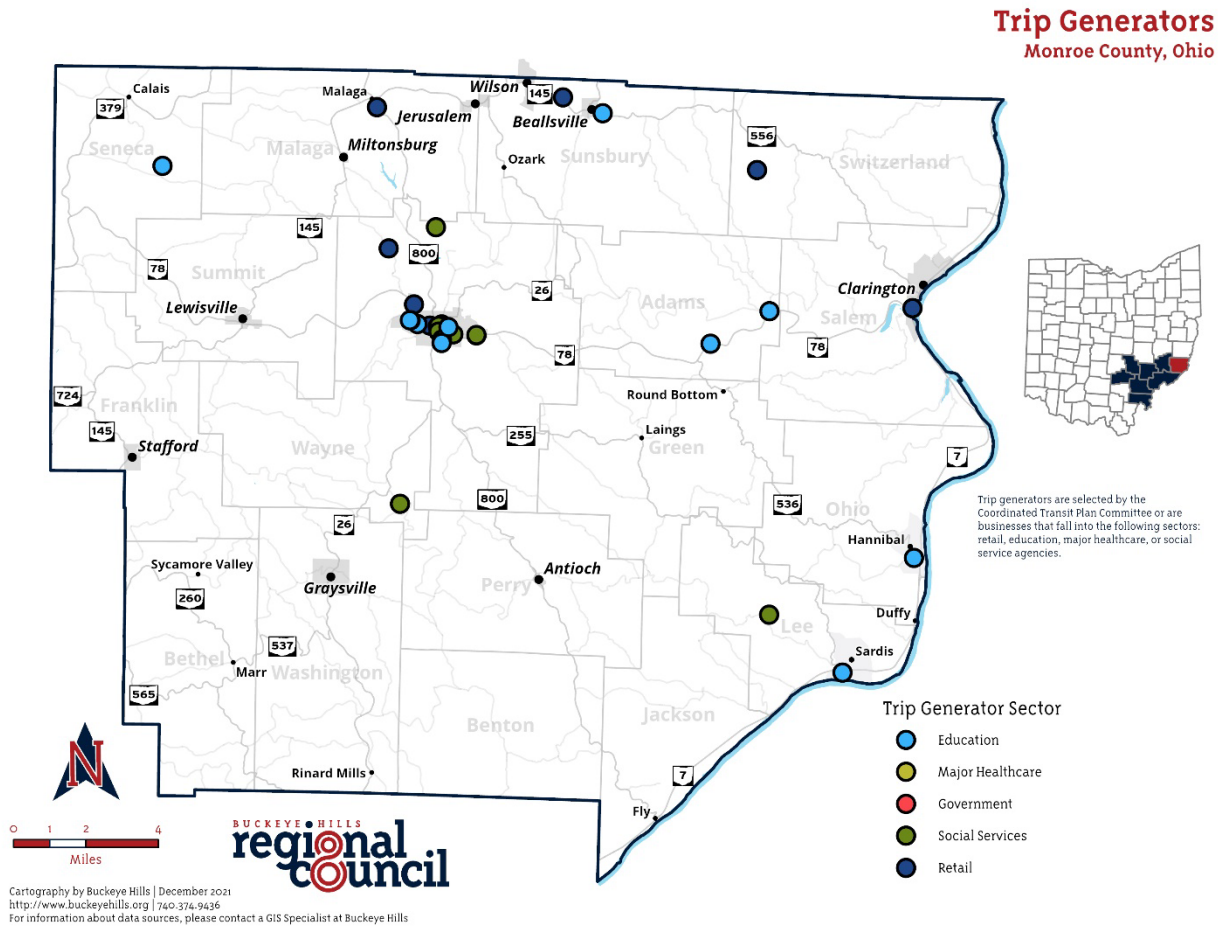


The map above indicates the areas where the concentration of households with no vehicle available in Monroe County. There are approximately 7.8% of households that do not have a vehicle in the entire county. The absence of a vehicle in the household is often an indication of the need for transit/transportation services. The central census tract, containing the county seat of Woodsfield and the village of Lewisville, has the highest concentration of households without a vehicle at 13.3%.

A high percentage of zero-vehicle households is concentrated in the Village of Woodsfield but is spread throughout the county.

ASSESSMENT OF NEEDS AND GAPS

The next two exhibits illustrate the density of activity in Monroe County indicating the locations of top destinations for the existing transportation providers, as well as major trip generators for anyone in the area, including those who drive a personal vehicle.



Major trip generators are located mostly in the Village of Woodsfield. The rural areas of the county need to travel to the Village in order to gain access to job opportunities, medical facilities, food access, social service agencies and educational institutions.

ASSESSMENT OF NEEDS AND GAPS

Most major trip generators in the County are located in the Village of Woodsfield. This is a map of the major trip generators in Monroe County including governmental offices, major shopping areas, and major employers.

Major healthcare facilities including hospitals, mental health facilities, and urgent care branches included:

- Dr. Kenneth Cooper
- Eye Care Associates
- Marden Rehabilitation
- Marietta Memorial Primary Care – Woodsfield
- Ohio Hills Health Services
- South East Inc.
- Tri County Help Center
- WVU Medicine

Major education facilities in the county include:

- Guernsey-Monroe-Noble Heart Start
- St. Sylvester School
- Switzerland Of Ohio Local School District

Major shopping centers in the County included:

- Ace Hardware
- Advance Auto Supplies
- Bellwood, Inc.
- Carry Clarrington Out, LLC.
- Convenient Food Mart
- Dollar General
- Duke and Duchess
- Family Dollar Stores, Inc.
- Heritage Co-Op
- Malaga BP Grocery and Carryout, Inc.
- Modern Home and Hardware
- Monroe County Auto Parts
- Napa
- Red Head Quick Stop, LLC

ASSESSMENT OF NEEDS AND GAPS

- Riesbeck's Food Markets, Inc.
- Rite Aid
- Tractor Supply
- True Value Hardware
- Westfall Florist
- SOMA

Major Social services and Governmental agencies in the county include:

- BMV – Monroe County Services
- GMN Tri County CAC, Inc.
- Monroe County Board of Developmental Disabilities
- Monroe County Chamber of Commerce
- Monroe County Court House
- Monroe County Department of Job and Family Services
- Monroe County Health Department
- Monroe County Historical Society
- Monroe County Humane Societies
- Monroe County Public Library
- Monroe County Senior Center
- Monroe County Veteran Services

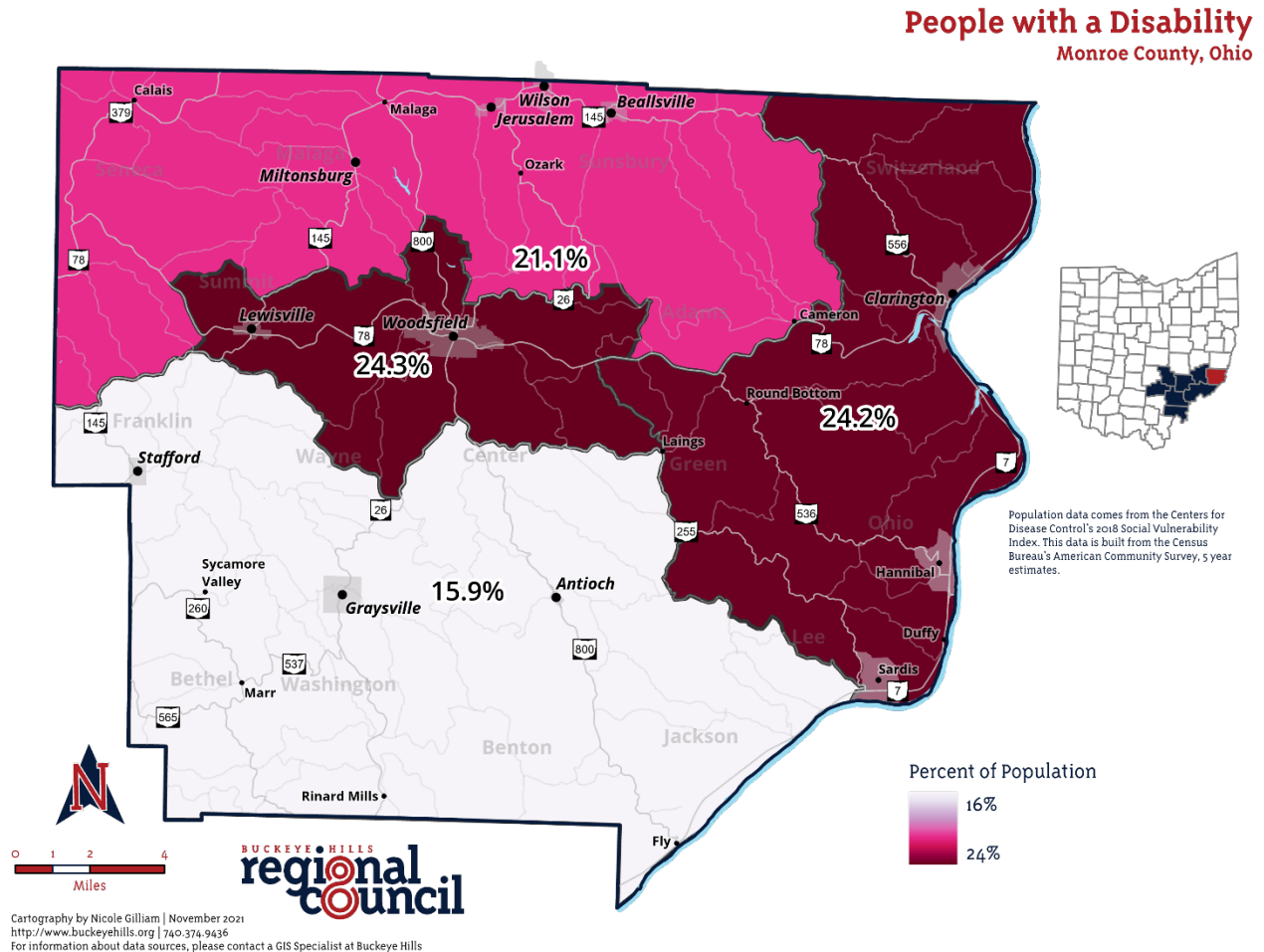
Major Employers in the county include:

- American Heavy Plate
- Arbors at Woodsfield
- Board of Developmental Disabilities
- Brandywine Assisting Living
- GMN Tri County CAC, Inc.
- Monroe County Public Transit
- Ohio Hills Health Services
- Riesbeck's Food Market
- Rite Aid Pharmacy
- Slay Transportation Co. Inc.
- Stellar Care Center
- Switzerland of Ohio Local Schools
- Tractor Supply
- Trustwell Living at Westwood Place

ASSESSMENT OF NEEDS AND GAPS

- Various Fast Food Restaurant Chains
- WVU Medicine

The map below illustrates the areas where the number of individuals with disabilities are concentrated. In Monroe County, approximately 21.4% of the population is considered disabled.



Based on the demographic data above, it is critical that affordable transportation options are available for community members residing in the rural areas of the county, especially seniors, the disabled, and zero-vehicle households, to connect them to a variety of services available elsewhere in the County.

GENERAL PUBLIC AND STAKEHOLDER MEETINGS/FOCUS GROUPS

On behalf of Monroe County, Buckeye Hills Regional Council Mobility Management staff conducted and facilitated two local meetings and focus groups to discuss the needs and gaps in mobility and transportation. Six total people participated in the meetings. Of those, six self-identified as older adults, and one self-identified as being a person with a disability. More information about what meetings were held and attendance at those meetings is available upon request.

ASSESSMENT OF NEEDS AND GAPS

During the meetings, the Mobility Management Facilitator, Brandi Hesson, presented the importance of locally developed Coordinated Transportation Plans from neighboring counties and discussed the activities of those plans that have helped to address some of the unmet transportation needs and gaps in services for the respective Counties and how those activities and best practices can be applied in Monroe County.

Following the initial presentation, members of the public and stakeholders were asked to offer any observed gaps in transportation services and needs which the facilitator added to a list. The focus of the discussion was transportation for older adults, individuals with disabilities, and people with low incomes. However, several other topics that impact mobility options for the general public were discussed.

After the list of gaps/needs list was developed, each participant was asked to rank the gaps/needs representing a high, medium, or low priority.

During the meetings, participants discussed more than five mobility issues to achieve, preserve, avoid, or eliminate through transportation services coordination. Transportation stakeholders will consider these unmet needs when developing transportation goals and strategies, and grant applications. The exhibit at the end of this section provides a summary of the unmet mobility needs discussed during the meetings as well as the needs identified by the survey results.

SURVEYS

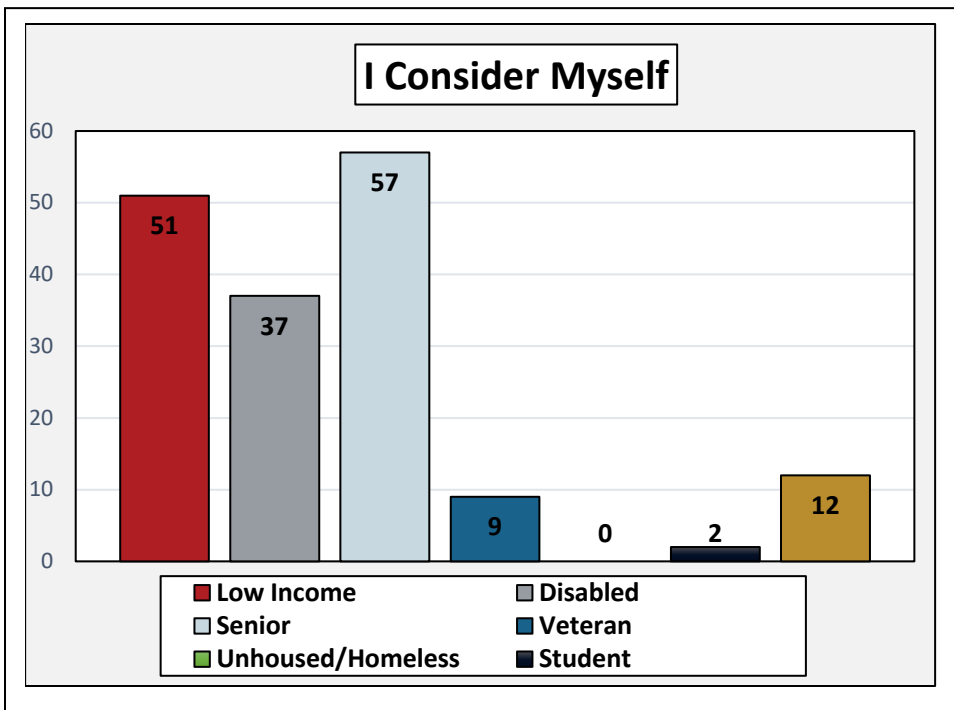
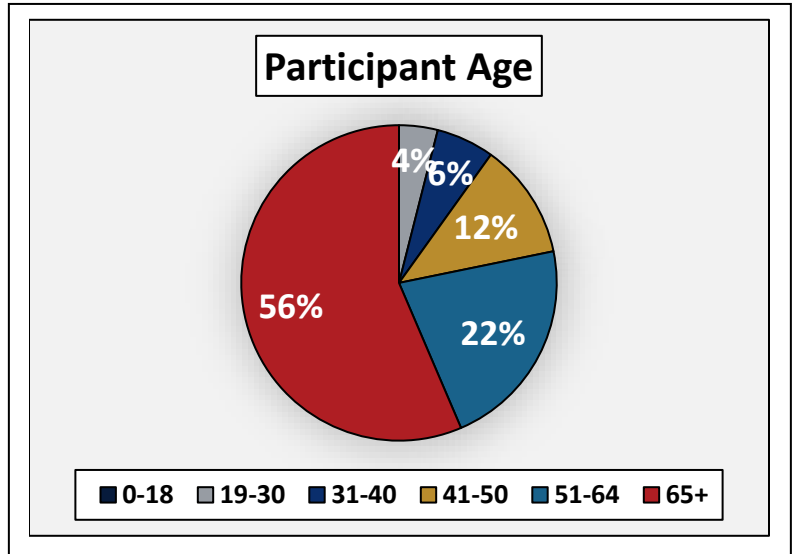
The Monroe County Transportation Advisory Committee designed a public engagement survey to better understand the needs of residents in the county from the public's perspective. One important aspect of this survey is the need to capture older individuals and/or people with disabilities. There were seventy-eight responses returned from the general public: 37 of the respondents reported disabilities; 57 considered themselves older adults.

All questions allowed respondents to mark multiple answers or no answer at all to capture a more complete response. Because of this some percentages and numbers may not match the total number of respondents. A copy of the survey can be found in the appendix of this document and collective and individual responses can be provided upon request.

ASSESSMENT OF NEEDS AND GAPS

Although the survey was targeted toward populations likely to contain older adults, a wide array of ages was captured. A distribution of those ages can be seen in the chart on the right. A plurality of respondents was 65 and older, but a fairly even distribution of responders was between 18 and 64. The next largest group after seniors was 65+. The distribution of age groups provided a good look at the needs of the senior population while also capturing the needs of many of those younger than 65 years old.

The respondents were also asked how they would identify themselves, given a list of categories. The chart to the left illustrates that respondents from all the groups



identified were captured. Fifty-three of those responding identified as low-income. Also, a large group of respondents identified themselves as seniors and/or disabled. This is not a surprising response due to the large number of people who stated they were 65 years or older in a previous question.

Due to the large number of senior and disabled respondents that completed the survey, it was also important to capture if they use assisted devices in their daily activities. About 49% of the respondents stated that they do not use any such device.

However, it is important to note that 16% of respondents use a cane, 16% use a walker, and 9% use a wheelchair daily. This is important when trying to determine the challenges residents face when trying to get to a public transit stop or the need for a handicap-accessible vehicle.

It was also important to determine what means of public transportation residents of the county are using. Responses showed that most people were using Monroe County Public Transportation as provided transportation. However, respondents stated they use other means of transportation, such as Monroe County Senior Center, the second-most. The Monroe County Veterans Services came in third.

ASSESSMENT OF NEEDS AND GAPS

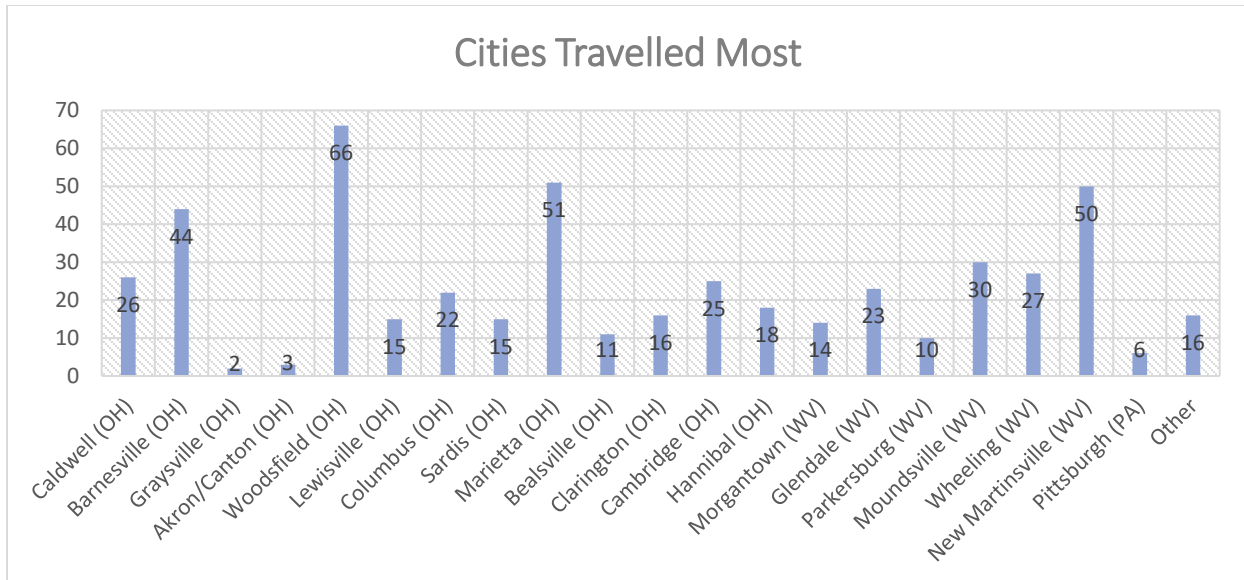
The survey also attempted to determine why residents do not use existing public transportation. Because of the nature of how the survey was distributed, the highest number of responses stated that they did use public transportation options. The next highest response, however, was “Unsure/I don’t know.” This implies that greater outreach and increased awareness could result in greater usage of public transportation options.

Of those responding, 93% do not use public transportation to get or maintain employment. There was a group of 50% of responders who did not know if they used public transportation for that purpose. Additionally, 33% said they mostly drive themselves for regular activities, and 39% said they mostly rely on family or friends. Twenty-nine percent, however, relied on public transportation for some of their trips.

In an effort to capture both highly desired destinations as well as needed times of day for public transportation access, respondents were able to choose destinations and desired times in conjunction with one another. The results are in a heat chart below. Medical/health care was the top destination type, especially between 9 am and 12 pm. Church, Bank, and work were also highly requested. Predictably, between 6 pm and 12 am rides were needed the least, except for commute to visit friends and Family.

Locations Requiring Transportation										
	Medical/ Health Care	Shopping	Church	Senior Center	Bank	Friends/ Family	Work	Government	Other	
6am-9am	8	2	4	0	1	1	12	2	0	0
9am-12pm	18	1	12	3	12	3	3	8	5	5
12pm-3pm	8	7	1	2	3	4	1	2	1	1
3pm-6pm	0	3	1	0	1	3	3	1	0	0
6pm-9pm	1	8	1	0	1	9	2	0	1	1
9pm-12am	0	4	0	0	0	0	0	0	0	0
12am-6am	0	1	0	0	1	0	0	0	0	0

ASSESSMENT OF NEEDS AND GAPS



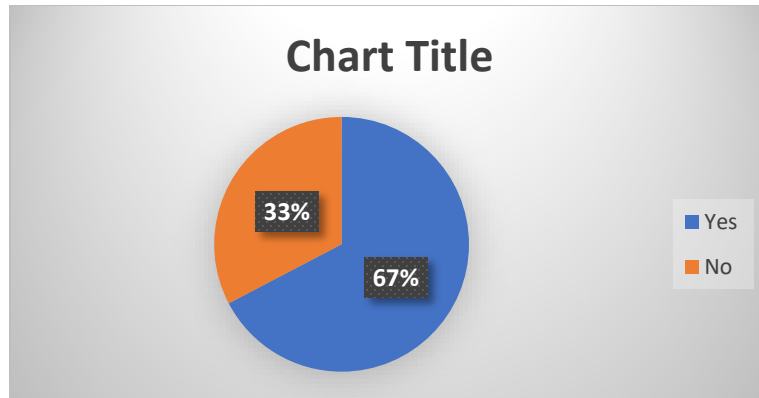
To determine the needs of the community it is important to identify destinations and times of day when public transportation is needed, but we also need to look at the cities people visit. The chart above illustrates what locations respondents said they visit most. This chart shows that nearly 65% of the respondents visit Woodsfield. However, it is important to note that almost 50% of respondents listed New Martinsville, WV, and about 50% listed Marietta and Wheeling, WV. Most of the destinations listed on this chart are out of the County.

When talking about transportation needs and barriers, non-emergency medical transportation always seems to be at the top of the list. It is important to understand where these appointments are located, how often one has medical appointments, and if transportation is a barrier to reaching them. Monroe County does not have a hospital and only has one urgent care in the county. With that being said, 33% of residents stated that they have to travel outside of the County monthly for medical appointments. The survey also indicated that 21% of individuals who responded to the survey stated that they rarely/never have medical appointments outside of Monroe County. They also stated that 26% have medical appointments once a year, and 6% once a week out of the county. It is safe to say that according to the respondents of the survey most of the non-emergency medical appointments needing transportation are located out of the county.

Non-emergency medical appointments are critical to the County residents. When they were asked if they have ever missed a medical appointment, 19% stated that they have missed appointments due to lack of transportation. However, this does not give clear indication on whether the appointment was missed because transportation providers were at full capacity, or

if they missed the appointment due to the lack of knowledge of non-emergency transportation providers.

ASSESSMENT OF NEEDS AND GAPS



It is necessary to determine what changes can be made to public transportation services to make them more appealing to residents. There were several answers given, however most people stated that they would like more available on-time and drop-off time schedules. While others stated that would like transportation services on Saturdays and Sundays. A small number of individuals stated that they would like more destinations available, expansion of hours of operation, and less advanced time to make reservations.

The need for a Monroe County Mobility Manager could not be more relevant to educating individuals about available transportation options and increasing community awareness. This position needs to be accessible and trusted by the community. When they were recently asked about public transportation, 11% stated that there were no public transportation options where they lived. This number has decreased since the last survey due to outreach, public involvement, and collaboration among transportation providers. It is also important to recognize that the program would play a key role in connecting individuals with transportation options.

For the Mobility Manager to be able to connect with individuals and assist them with their transportation resources, it is important to understand where they are currently getting their information. Most individuals stated that they were getting their information by calling the transportation provider. Some stated that they were using the local newspaper or transportation provider websites, while several people reported they would ask a friend or family member. These sources are important to understand because they would be a good option to consider targeting mobility management marketing.

ASSESSMENT OF AVAILABLE SERVICES

FINAL INSIGHTS AND ANALYSIS OF DATA: GENERAL PUBLIC SURVEYS

Clients tend to live in rural areas of the County where few affordable transportation options are offered. Many are unaware of the services available to them or how to utilize them. Due to the lack of affordable transportation options to rural areas of the County, greatly affects individuals' access to jobs, medical appointments, and shopping.

Many clients cannot utilize public transportation because the hours of services do not run late enough, early enough, or on the weekends to be used for community or job access. This is especially true for second-shift employees. These clients stated that they would be willing to pay more per trip for such improvements to public transportation.

Other individuals need transportation to medical appointments frequently, at times outside of the County. There are few transportation options that individuals can afford with transportation services outside of the county. As such, 33% of the respondents communicated that they had missed medical appointments as a result of a lack of transportation.

Plan Strategies and Goals:

- Extension of service hours to run earlier and later in the day.
- Expansion of service days to include Saturday and Sunday.
- Community Outreach to raise transportation option awareness.
- Build upon existing services for out-of-county medical trips.

CHALLENGES TO COORDINATED TRANSPORTATION

In addition to identifying gaps and needs, the transportation advisory committee gathered information from the public, stakeholders, and their own professional experience to also identify any challenges to providing coordinated transportation services. These challenges included the following:

- Public awareness of transportation options.
- Funding for expansion of service.
- Lack of capacity for service provisions.

SUMMARY OF UNMET MOBILITY NEEDS

The following table describes the identified unmet transportation needs and the method used to identify and prioritize each need. Needs are listed in order of their rank from highest to lowest priority.

Summary of Unmet Mobility Needs		
Rank	Unmet Need Description	Method Used to Identify and Rank Need
1	Creation of Monroe County Mobility Manager Program	User Surveys Monroe County Transportation Advisory Committee
2	Expansion of In-County and Out-of-County Medical Transportation	User Surveys Monroe County Transportation Advisory Committee
3	Extension of Service Hours and Days	User Surveys Monroe County Transportation Advisory Committee
4	Increase availability of Active and Alternative Transportation Options	Monroe County Transportation Advisory Committee

V. GOALS AND STRATEGIES

DEVELOPING STRATEGIES TO ADDRESS GAPS AND NEEDS

If they are to be effective, strategies for improving transportation for Monroe County should address the service gaps and user needs identified in this plan. As described, the gaps and unmet needs were based on information obtained from geographic analysis, the attendees participating in the meetings, and responses to the public survey.

Based on information gathered throughout the plan development process, the Monroe County Transportation Advisory Committee developed the following strategies to address the gaps and unmet transportation needs. Priority levels are assigned by considering the primary funding sources that could be available to support plan implementation compared to the importance of meeting this unmet need expressed by the public and stakeholders. Not all strategies are activities specifically eligible for funding under the existing programs, nor is it guaranteed that sufficient funding will be available to achieve every strategy identified. In addition, the local stakeholders will need to provide support and commit to pursuing the strategies if they are to be accomplished. Nonetheless, these strategies have been tailored to four of the identified primary gaps and needs.

Below is an outline describing the prioritized strategies to address each of the identified unmet transportation needs and gaps in service for Goals 1 through 4.

GOAL #1:

CREATION OF MONROE COUNTY MOBILITY MANAGER PROGRAM

Currently there is a lack of knowledge about current transportation options and needs, the coordination of services, advocacy for transportation, and education and utilization of services.

Strategy 1.1:

The survey results showed an overall lack of knowledge of current transportation services available. A mobility management program will educate the community, help connect individuals to transportation options, advocate for transportation in planning meetings, and encourage the coordination of services in the County.

Timeline for Implementation: From the present thru to the completion of goals.

Action Steps:

- Identify a local match source.
- Apply for Ohio Department of Transportation 5310 funding for 2022.
- Identify support other than Ohio Department of Transportation 5310 funding to initiate project.
- Explore utilizing regional mobility coordination.

Parties Responsible for Leading Implementation: Monroe County Transportation Advisory Committee, Buckeye Hills Regional Council (BHRC).

Parties Responsible for Supporting Implementation: Buckeye Hills Regional Council, Monroe County Transportation Advisory Committee

Resources Needed: Funding, staff time, local cash, technology.

Potential Cost Estimate: \$110,000.00

Potential Funding Sources: Federal Transportation Programs, Ohio Department of Transportation, Monroe County, Monroe County Department Job and Family Services, Monroe County Board of Developmental Disabilities and other Social Service Providers.

Performance Measures/Targets:

- Establishment of Monroe County Mobility Management Programs.
- Increase of utilization of transportation assets and programming.
- Completion of goals as listed in the Monroe County Coordinated Transportation Plan.

GOAL #2:

EXPANSION OF IN-COUNTY AND OUT-OF-COUNTY MEDICAL TRANSPORTATION

The survey results show that low-income families and individuals, seniors, and individuals with disabilities are currently missing medical appointments and treatments due to financial restrictions or lack of transportation options.

Strategy 2.1:

Conduct outreach to individuals and healthcare workers about transportation options. Collect data and supporting information documenting the need for additional in and out of county medical transportation services.

Timeline for Implementation: Present to January 2025.

Action Steps:

- Document need for in-county medical transportation.
- Document need for out-of-county medical transportation.
- Identify potential funding sources.
- Create at least one or more pilot project(s) with willing transportation providers(s) to test the feasibility of providing out-of-county medical trips.

- Seek for ways to expand pilot and implement full-time solutions.
- Increase the number and availability of transit drivers

Parties Responsible for Leading Implementation: Monroe County, Buckeye Hills Regional Council, Monroe County Transportation Advisory Committee.

Parties Responsible for Supporting Implementation: Local transportation provider(s) and funding sources.

Resources Needed: Funding, staff time, contract services, vehicles, building space, publication and printing, local cash, technology, capital needs.

Potential Cost Range: Dependent on project scale.

Potential Funding Sources: Contract revenue, ODOT 5310 & 5311 Operations, Ohio Developmental Disabilities Council, Monroe County Board of Developmental Disabilities, Monroe County Department of Job and Family Services.

Performance Measures/Targets:

- Completion of needs study.
- Completion of budget model and analysis of required funding.
- Application and awarding of funding.
- Completion of expansion of in-county and out-of-county medical transportation services.

GOAL #3:

EXTENSION OF SERVICE HOURS AND DAYS

Current public transportation service hours are limited in the mornings, evenings and weekends. Public engagement revealed that individuals cannot utilize the services due to limited service times and days. There are few affordable transportation options available in Monroe County that can fill the gaps in service times.

Strategy 3.1:

The survey results showed a desire and need for extended service hours and days of fixed-route services and on-demand services to cover early morning hours, later evening hours, and on the weekends, especially Sunday.

Timeline for Implementation: Present to January 2025.

Action Steps:

- Identify and document the need for an extension of service hours.

- Identify and document the need for an extension of service days.
- Continued outreach and support for extension of service hours and days.
- Identify potential funding opportunities and partnerships

Parties Responsible for Leading Implementation: Monroe County, Village of Woodsfield, Monroe County Transportation Advisory Committee.

Resources Needed: Funding, staff time, contract services, vehicles, building space, publication and printing resources, local cash, technology, and capital needs.

Potential Cost Range: Dependent on transportation provider needs, types, and potential time extensions.

Potential Funding Sources: Contract revenues, ODOT 5310 & 5311 Operations, Ohio Developmental Disabilities, Monroe County Board of Developmental Disabilities, and Monroe County Job and Family

GOAL #4

INCREASE AVAILABILITY OF ACTIVE AND ALTERNATIVE TRANSPORTATION OPTIONS

Residents of Monroe County need additional mobility options beyond a car. As one of the oldest counties in the state, the residents increasingly need access to goods and services that do not require them to drive. Exploring these options, through an Active Transportation Plan, as well as seeking funding for known projects and promoting actions that can lead to increased mobility and accessibility for the residents can help those who cannot drive access what they need.

Strategy 4.1:

Active Transportation Plans are dedicated to increasing the safety of active transportation users and increase the number of residents participating in active transportation. These plans allow a community to prioritize their goals for human-powered transportation options. They can include a variety of activities such as implementing Complete Street policies, installing bus stops and benches, creating safe pedestrian crossings and walks, and expanding bike paths and lane infrastructure. Developing an Active Transportation Plan can make accessing funding easier.

Timeline for Implementation: Present to January 2025.

Action Steps:

- Create an Active Transportation team
- Create an Active Transportation Plan with the local Team
- Conduct outreach, education, and advocacy regarding the Active Transportation Plan
- Collect data and evaluation of measures

Parties Responsible for Leading Implementation: Monroe County Transportation Committee, Monroe County, Monroe County Health Department, Buckeye Hills Regional Council

Resources Needed: Funding, staff time, building space, publication and printing resources, local cash, and capital needs.

Potential Cost Range: Dependent on projects currently underway.

Potential Funding Sources: Ohio Department of National Resources, Ohio Department of Health, Village of Woodsfield, Monroe County, Buckeye Hills Regional Transportation Planning Organization

Performance Measures/Targets:

- Track amount of Active Transportation-related events
- Increase in the amount of transportation signage
- Funding awarded for projects
- Miles of infrastructure created
- Amount of Active Transportation policies passed

Strategy 4.2:

Seek funding for existing active transportation projects.

- Safe Routes to School project
- Senior Apartments to grocery store access
- Expand a current walking path

Strategy 4.3:

Promote policies, like complete streets, that can make access without a car easier.

PLAN ADOPTION

PLAN ADOPTION

The process for Plan Adoption involved months of preparation and several meetings of the Transportation Advisory Committee as well as several public meetings and surveys. The Committee worked diligently to ensure the process included older adults, individuals with disabilities, members of the general public, and representatives from public, private and non-profit transportation and human services providers. Though it can be a challenge to get attendance at public input meetings, the survey conducted during the planning process had excellent response rates from the public, including over one hundred returned surveys. The surveys included a broad sampling of individuals participating including older adults, individuals with disabilities, and members of the general public. If individuals required assistance with the surveys, it was provided. Representatives from public, private, and non-profit transportation providers were also invited to participate in the process as well, though not all providers elected to participate. The Committee received input from the Monroe County Board of Developmental Disabilities and a local school district as well. During the public meetings, the Monroe County Transportation Advisory Committee also approached individuals to serve on the Committee and was able to gain interest from several individuals. The Monroe County Transportation Advisory Committee is committed to improving the transportation services to those in Monroe County and will continue to look to permanent Committee members to improve the participation process. Following a review of the draft document and comment period, the Monroe County Transportation Advisory Committee adopted this plan on January 20, 2022.

On the date of January 20, 2022, the Monroe County Transportation Advisory Committee approved this Coordinated Transportation Plan. A signature page can be found in Appendix E.

APPENDIX A: LIST OF PLANNING COMMITTEE PARTICIPANTS

The Transportation Advisory Committee consists of representation from local agencies as well as participation of individuals with disabilities, older adults, and members of the general public. More information about the planning committee is available upon request by contacting.

Agency Representation	
Name	Agency
Amy Zwick	Monroe County Engineer
Bobby White	Morgan County Mobility Manager
Kelly Isaly	Buckeye Hills Regional Council
Buddy Winland	Monroe County Public Transit
Dan Lollathin	Monroe County Board of Development Disabilities
John Sampson	Monroe County Public Transit
Gary Ricer	GMN Tri-County Community Action
Alyssa Stephens	Monroe County OSU Extension Office
Jeanette Schwall	Monroe County Department of Job and Family Services
Carol Hehr	Monroe County Health Department
Mary Jo Westfall	Monroe County OSU Extension Office
Melissa Zollar	Buckeye Hills Regional Council
Becky Russell	GMN Tri-County Community Action/Senior Center
Samantha Wood	GMN Tri-County Community Action/Senior Center
Jason Clutter	Switzerland of Ohio Local School District
Christ Myers	Buckeye Hills Regional Council
Jan Chambers	Ohio Hills Health Services
Courtney Briggs	Buckeye Hills Regional Council
Jessica Price	Monroe County Board of Development Disabilities
Anthony McSwords	Monroe County Veterans Services
Julia Hinzman	Buckeye Hills Regional Council
Bill Bolon	Monroe County Commissioner
Diane Burkhart	Monroe County Commissioner
Mick Schumacker	Monroe County Commissioner

In addition to the participants listed above, the Monroe County Transportation Advisory Committee also included representation of older adults, people with disabilities, and members of the general public. The Transportation Advisory Committee and other stakeholders also conducted a wide variety of activities designed to increase the involvement of community stakeholders in identifying community resources, addressing community needs, and setting goals and priorities. More information about the efforts that occurred is available upon request. To request additional information please contact:

Kelly Isaly kisaly@buckeye hills.org
 Buckeye Hills Regional Council, Mobility Manager
 1-800-331-2644 opt. 6

APPENDIX B: LIST OF ANNUAL REVIEWS AND PLAN AMENDMENTS

LIST OF ANNUAL REVIEWS AND PLAN AMENDMENTS

It is required that this plan be reviewed by the planning committee annually, with reviews occurring in the final quarter of the year. For more information on when the next annual review will happen, how to be involved in the annual review process or to request information on how to make changes or corrections to this plan between yearly reviews, please contact:

Kelly Isaly
Monroe County Mobility Manager
1-800-331-2644 ext. 6
kisaly@buckeyehills.org

ANNUAL REVIEW – JUNE 2024

On May 22, 2024, the Monroe County Coordinated Plan Annual Review meeting was held with members of the committee present. The following changes that did not require an amendment include:

- Update to Committee Representation
- Updated Major Employers
- Updated Major Medical Facilities
- Survey Results for 2023

In addition, the following providers were added to the list of existing transportation services:

- Monroe County Veterans Services
- Olde Towne Taxi LLC

In addition, one public meeting was held on May 22, 2024, from 10:00 am – 12:00pm at the Generations Complex in Woodsfield to review the plan and discuss transportation throughout the county. The Mobility Manager continues to work in the county to address the goals and strategies of the coordinated plan. Several meetings and trainings have been facilitated and attended by the Mobility Manager to improve community-wide transportation.

Working together as a community has allowed for continued efforts to reach the goals in the coordinated plan which improves mobility options overall. Combined efforts have produced positive outcomes benefiting the citizens of Monroe County.

On, June 7, 2024, the Buckeye Hills Regional Council Executive Board was provided with the updates to the Monroe County Coordinated Transportation Plan as listed above.

APPENDIX C: DEFINITIONS

There are several terms used throughout the plan that may be unique to transportation providers or human service agencies. The terms are defined here for reference.

Coordination – Collaborative efforts toward understanding and meeting mobility needs in the most appropriate, cost-effective, and responsive manner.

FAST Act – Congress established the funding for Federal Transit Administration programs through authorizing legislation that amends Chapter 53 of Title 49 of the U.S. Code. On December 4, 2015, President Obama signed the Fixing America’s Surface Transportation (FAST) Act, reauthorizing surface transportation programs through Fiscal Year 2020.

Gaps in Service – A break in the continuity of available transportation resources such as a break between hours of operation or a break between two or more geographic areas.

Lead Agency – The organization responsible for facilitating outreach; composing a plan that meets the requirements of current Federal and State legislation; maintaining documentation from the planning process and making it available upon request; and leading stakeholders through annual reviews, amendments, and updates of the plan. The Lead Agency also is responsible for submitting the adopted Coordinated Plan and all amendments or updates to participating stakeholders and ODOT.

Planning Committee – (The Monroe County Transportation Advisory Committee) The Planning Committee is composed of key community stakeholders. The Planning Committee members agree to actively participate in the planning process and act as the planning advisory and adopting entity.

Ridership – The total number of passengers who boarded vehicles are counted each time they board a vehicle.

Section 5310 Program – Enhanced Mobility of Seniors & Individuals with Disabilities (49 U.S.C. 5310) provides Federal formula funding for the purpose of assisting private nonprofit groups in meeting the transportation needs of older adults and people with disabilities when the transportation service provided is unavailable, insufficient, or inappropriate to meeting these needs. The program aims to improve mobility for seniors and individuals with disabilities by removing barriers to transportation services and expanding transportation mobility options.

Section 5311 Program – The Formula Grants for Rural Areas program provides capital, planning, and operating assistance to states to support public transportation in rural areas with populations of less than 50,000 where many residents often rely on public transit to reach their destinations. The program also provides funding for state and national training and technical assistance through the Rural Transportation Assistance Program. Subrecipients may include state or local government authorities, nonprofit organizations, and operators of public transportation or intercity bus service.

Section 5307 Program – The Urbanized Area Formula Grants program (49 U.S.C. 5307) makes federal resources available to urbanized areas and governors for transit capital and operating assistance in urbanized areas and for transportation-related planning. An urbanized area is an incorporated area with a population of 50,000 or more.

Transportation – Transportation is broadly defined to include traditional transit, human service agency services, on-demand (taxi-like) services, bicycle and pedestrian programs and amenities.

Unmet Transportation Needs – Transportation that is wanted or desired but is not currently available.

APPENDIX D MOBILITY SURVEY



Monroe County Mobility Survey



1. My age range is (check one box)

- 0-18 41-50
- 19-30 51-64
- 31-40 65+

2. I consider myself? (check all that apply)

- Low income Veteran
- Disabled Unhoused/Homeless
- Senior Student
- None of the above

3. What is your residence zip code?

4. Is English your primary language?

- Yes
- No: Your primary language is _____

5. Do you have a disability which requires you to use a device to help you get around?

- No Cane
- Walker Wheelchair
- Other: _____

6. Would you like to walk or bike to your daily activities?

- No I already do
- I would, but it's unsafe I would, but there are no trails or sidewalks

7. Is public transportation, carpooling, or senior services transportation an option for you? (check all that apply)

- Yes, I use it. No, it is not available where I live.
- No, it is not available at the times or days when I need it. No, it does not go where I need to go.
- No, the vehicles are not wheelchair accessible. No, it is unaffordable.
- No, I do not qualify for these transportation options. Unsure/I don't know.

8. If you used a local transportation agency, please specify the transportation provider (check all that apply)

- Monroe County Transit Monroe County Senior Center Provided Transportation
- Monroe County Job & Family Services
- Arbors at Woodfield Monroe County Veterans Service Commission
- Stellar Care Center Other: _____

9. If you are currently using transportation services, why? (check all that apply)

- To maintain employment To access medical appointments
- Personal errands To access addiction recovery services
- I am uncomfortable driving I don't have a car
- I don't have a valid driver's license I don't have money for gas
- A disability prevents me from driving Unsure/I don't know
- Other: _____

10. Over the past 12 months, how much did you rely on public transportation (bus, door-to-door, van service)?

- For all my trips For some of my trips
- For most of my trips I primarily drive myself
- For half of my trips I primarily rely on family or friends

11. When do you need transportation most often for each of these general purposes? (select all that apply)

	Medical/Health Care	Grocery Stores/Shopping	Church	Monroe Co. Senior Center	Bank	Visit friends and/or family	Work	Governmental Office
12 am-6am	<input type="checkbox"/>	<input type="checkbox"/>	<input type="checkbox"/>	<input type="checkbox"/>	<input type="checkbox"/>	<input type="checkbox"/>	<input type="checkbox"/>	<input type="checkbox"/>
6am-9am	<input type="checkbox"/>	<input type="checkbox"/>	<input type="checkbox"/>	<input type="checkbox"/>	<input type="checkbox"/>	<input type="checkbox"/>	<input type="checkbox"/>	<input type="checkbox"/>
9am -12pm	<input type="checkbox"/>	<input type="checkbox"/>	<input type="checkbox"/>	<input type="checkbox"/>	<input type="checkbox"/>	<input type="checkbox"/>	<input type="checkbox"/>	<input type="checkbox"/>
12pm-3pm	<input type="checkbox"/>	<input type="checkbox"/>	<input type="checkbox"/>	<input type="checkbox"/>	<input type="checkbox"/>	<input type="checkbox"/>	<input type="checkbox"/>	<input type="checkbox"/>
3pm-6pm	<input type="checkbox"/>	<input type="checkbox"/>	<input type="checkbox"/>	<input type="checkbox"/>	<input type="checkbox"/>	<input type="checkbox"/>	<input type="checkbox"/>	<input type="checkbox"/>
6pm-9pm	<input type="checkbox"/>	<input type="checkbox"/>	<input type="checkbox"/>	<input type="checkbox"/>	<input type="checkbox"/>	<input type="checkbox"/>	<input type="checkbox"/>	<input type="checkbox"/>
9 pm – 12am	<input type="checkbox"/>	<input type="checkbox"/>	<input type="checkbox"/>	<input type="checkbox"/>	<input type="checkbox"/>	<input type="checkbox"/>	<input type="checkbox"/>	<input type="checkbox"/>

Other (please specify) _____

12. What cities or towns do you visit the most? (Check all that apply)

- Caldwell Woodsfield Sardis Clarington
- Barnesville Lewisville Marietta Cambridge
- Graysville Columbus Beallsville Hannibal
- Akron/Canton Glendale, WV Moundsville, WV New Martinsville, WV
- Morgantown, WV Parkersburg, WV Wheeling, WV Pittsburgh, PA
- Other: _____

13. About how often do you have medical appointments that are located outside of Monroe County?

- More than once a week Once a week
- Once a month Once a year
- Rarely/Never

14. Have you missed a medical appointment in the last 12 months due to lack of transportation?

- Yes No

15. If you are on dialysis, is it difficult to find transportation to treatments?

- I am not on dialysis
- Yes
- No

Monroe County Mobility Survey

16. What changes could be made to your transportation service options that would make them more appealing? (check all that apply)

- | | |
|--|---|
| <input type="checkbox"/> Service starting earlier in the morning | <input type="checkbox"/> Service ending later at night |
| <input type="checkbox"/> More available on-time and drop-off time schedules | <input type="checkbox"/> More destinations made available |
| <input type="checkbox"/> Service on Saturdays | <input type="checkbox"/> Service on Sundays |
| <input type="checkbox"/> Greater frequency in routes | <input type="checkbox"/> Wheelchair accessible vehicles |
| <input type="checkbox"/> No shared rides with others (i.e. Go directly to my destination without other stops) | |
| <input type="checkbox"/> Less advance time to make reservations requesting a trip (i.e. one-day or one-week advance notice as opposed to one-month advance notice) | |
| <input type="checkbox"/> Other: _____ | |

17. How much more would you be willing to pay per trip to have these changes implemented?

\$ _____

18. Are you familiar with the Monroe County Mobility Management program, which helps residents find transportation options to get from place to place, including across county lines?

- Yes
 No

19. How do you get information about transportation services you need? (check all that apply)

- | | |
|---|--|
| <input type="checkbox"/> Smartphone apps/text messages | <input type="checkbox"/> Provider websites |
| <input type="checkbox"/> Email | <input type="checkbox"/> Phone call to transportation provider |
| <input type="checkbox"/> Mailers/flyers | <input type="checkbox"/> Other: _____ |
| <input type="checkbox"/> I ask a friend or family member for help because I am not comfortable using the computer, smartphone apps, or calling by phone | |

OPTIONAL: Would you be interested in participating in a more focused survey or a focus group on the topic of personal mobility and accessibility? If so, please provide your contact information or any additional comments/feedback below.

Name: _____

Phone Number: _____

Email Address: _____

Additional Comments/Feedback: _____

PLEASE TELL US ABOUT YOUR TRANSPORTATION NEEDS!

FILL THIS OUT ONLINE AT <http://www.buckeyehills.org/mobility-management>

WE NEED YOUR HELP



We would like to hear from you! The intent of this brief survey is to gather information from the community about their transportation needs in Monroe County.

The survey is part of the 2023 update process of the Monroe County Coordinated Public Transit-Human Services Transportation Plan that coordinates the transportation needs and solutions of Monroe County to better serve our community. All information gathered is strictly confidential and will not be distributed to any private or third-parties. We very much appreciate your time in helping us gather this important information!

If you have any questions regarding the survey or simply prefer to leave comments regarding transportation needs by voice rather than using the following survey format, please call or email Kelly Isaly, Mobility Manager at kisaly@buckeyehills.org or 1-800-331-2644 Ext 6.

Buckeye Hills Regional Council
Generations Complex
47115 Black Walnut Parkway
Woodsfield, OH 43793

APPENDIX E: RESOLUTION

On January 20, 2022, the Monroe County Coordinated Transit Plan 2021-2025 was approved by the members of the Monroe County Transportation Advisory Committee below.

Amy Zwick, Monroe County Engineer

Bobby White, Morgan County Mobility Manager

Brandi Hesson, Buckeye Hills Regional Council

Buddy Winland, Monroe County Public Transit

Dan Lollathin, Monroe County Board of Developmental Disabilities

Denise Potts, Monroe County Public Transit

Gary Ricer, GMN Tri-County Community Action

Helen Ring, Monroe County Board of Developmental Disabilities

Jeanette Schwall, Monroe County Department of Job and Family Services

Kelly Isaly, Buckeye Hills Regional Council

Linda Master, Monroe County Health Department

Mary Jo Westfall, Monroe County OSU Extension Office

Melissa Zoller, Buckeye Hills Regional Council

Michele Hollins, GMN Tri-County Community Action/Senior Center

Mick Schumacher, Monroe County Commissioner